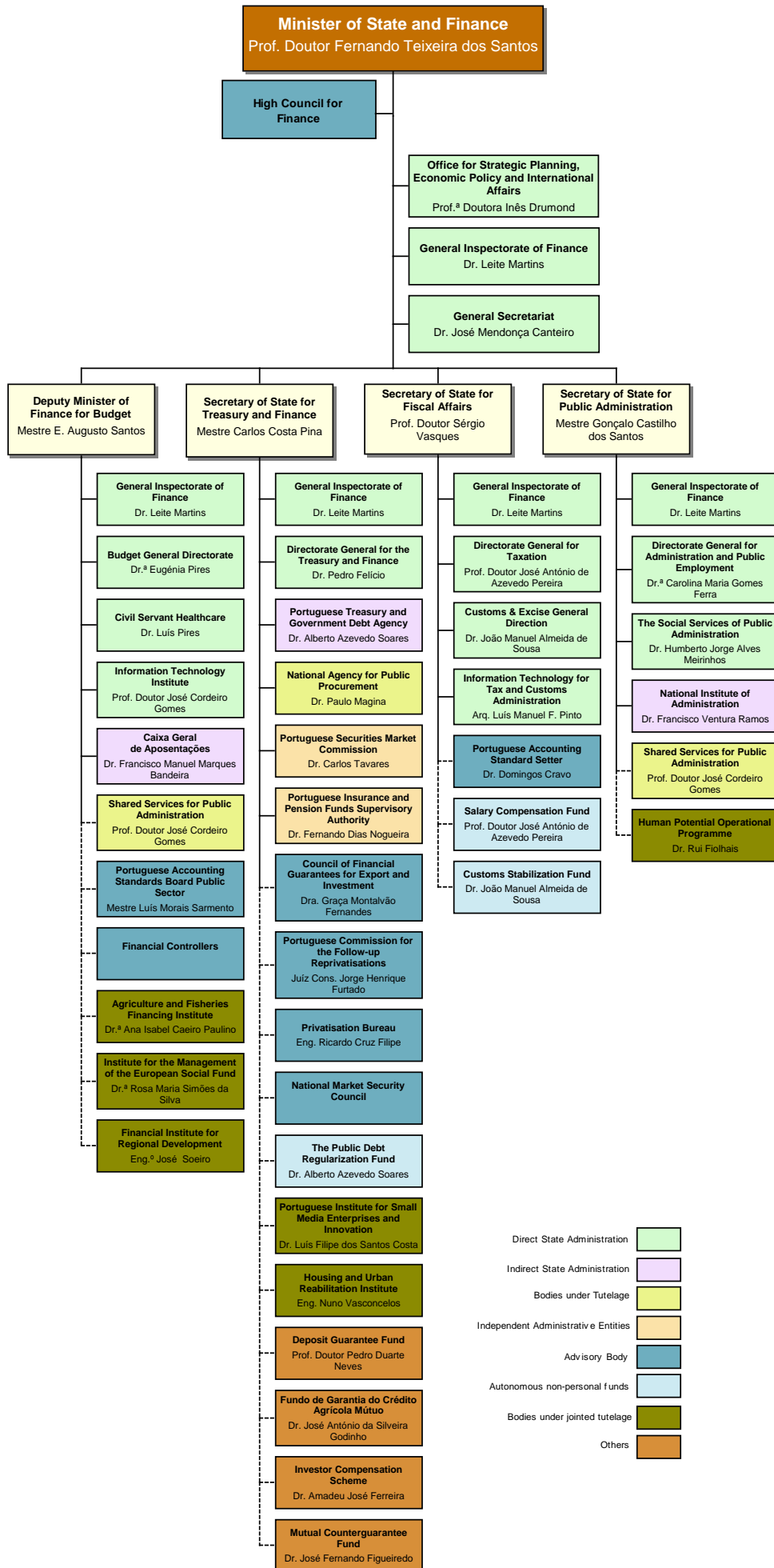


Ministry of Finance and Public Administration Organization Chart

(In accordance with powers delegated by the Minister of State and Finance on the Secretaries of State)



- Direct State Administration
- Indirect State Administration
- Bodies under Tutelage
- Independent Administrative Entities
- Advisory Body
- Autonomous non-personal funds
- Bodies under jointed tutelage
- Others